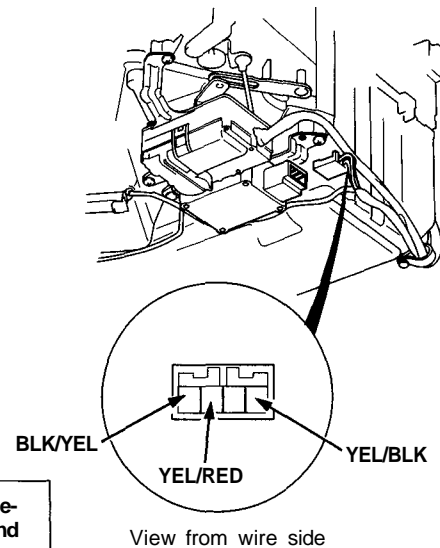
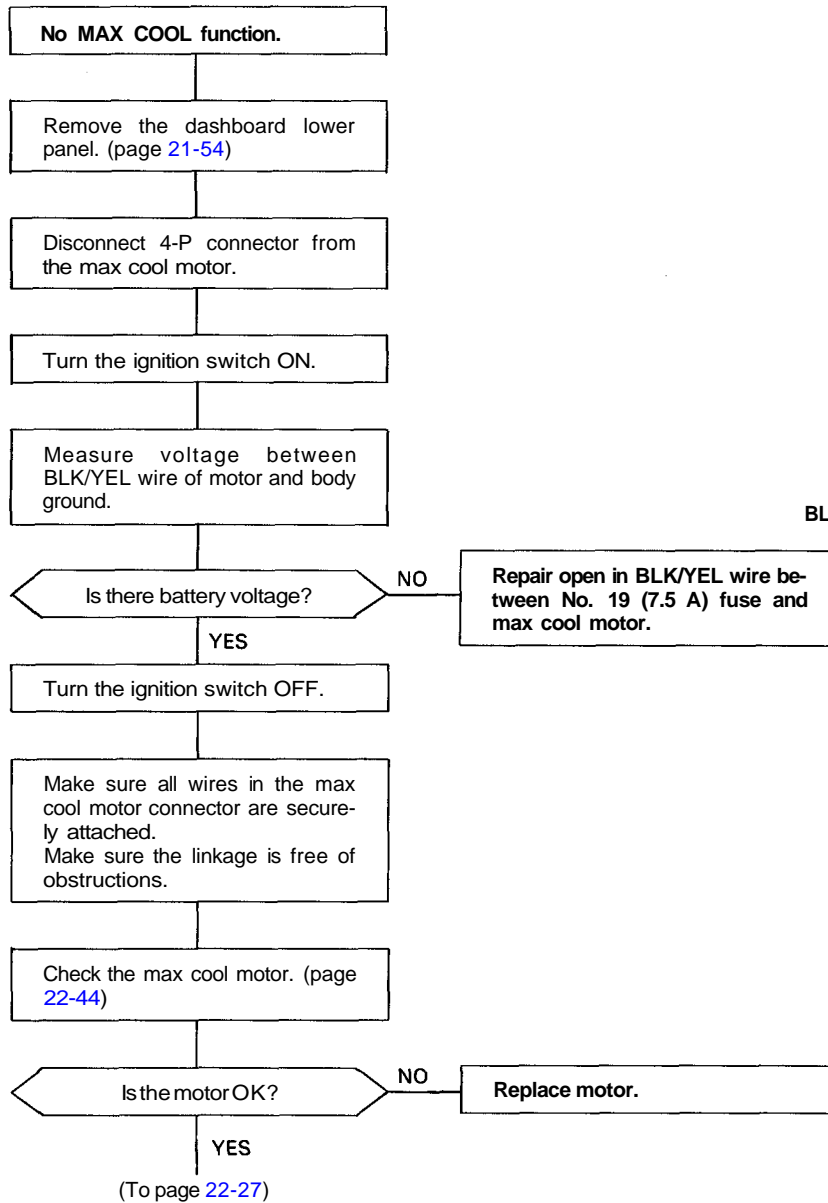


Troubleshooting

Max Cool Motor

The max cool door control motor regulates the max cool door according to output from the climate control unit.





(From page 22-26)

Remove the climate control unit.
(page 22-6)

Disconnect the 30-P connector
from the climate control unit.

Check each wire for continuity
between the motor and climate
control unit:

- YEL/BLK wire
- YEL/RED wire

Is there continuity?

NO

Repair any open in the YEL/BLK
or YEL/RED wire between the
max cool motor and climate con-
trol unit.

YES

Check each wire for continuity
between the motor and body
ground:

- YEL/BLK wire
- YEL/RED wire

Is there continuity?

YES

Repair any short in the YEL/BLK
or YEL/RED wire between the
max cool motor and climate con-
trol unit.

NO

Substitute a known-good climate
control unit and recheck. If
symptom/indication goes away
replace the original climate con-
trol unit.

